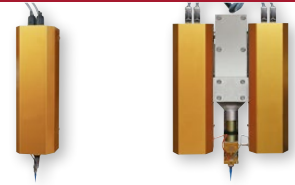


# TR300 volumetric dispensing table-top robot



## Piston-cylinder - NVD & NBD



## Eccentric screw - CFD & CBD



## Jet dispenser



## Cartridge dispenser



*The table-top robot is used for semi-automated dispensing operations of liquid or viscous materials. It combines flexibility with the required high levels of process quality and repeatability, all at reasonable costs.*



## Advantages

- Ideal for semi-automated processes
- High process accuracy and repeatability
- Process tested in laboratory with quality and cycle time optimization
- Compact purpose-built solution for any mta dispensers
- Robust for high load work
- Large working area
- User friendly
- Easy maintenance
- Open architecture for additional integration



## Features

- 3-axis cartesian robot
- Sturdy aluminium frame
- 300x300mm working area
- Needle cleaning unit
- Industrial PC controller with Windows 10 operating system
- Industrie 4.0
- Intuitive menu-driven mta MotionEditor software
- Traceability of dispensing settings
- Light curtains and safety guardings
- Remote maintenance with Team Viewer



## Options

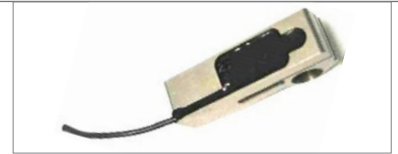
- Fixture customization
- Monitoring camera
- Vision for recentering
- Vision quality inspection
- Needle recentering system
- Traceability of parts
- ESD protection kit
- Part presence sensor
- Part height measuring sensor
- Signal tower for machine status
- Container with or without mixer
- Cartridge with holder
- Level detection
- Automated sponge dampening
- Complete handling of material processing system

## Typical dispensing applications

### Automotive



- Automotive sensor
- Globtop dispensing of two-components Epoxy for selective conformal coating
- Dispensed volume of 30 [mm<sup>3</sup>]

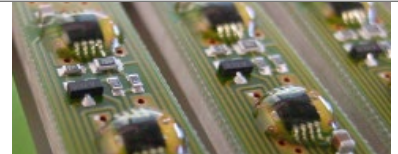


- Force sensor for car seat
- Coating of an electronic circuit with a two-component polyurethane
- Dispensed volume of 5 [cm<sup>3</sup>]

### Electronics



- Electronic connector
- Filling with two-components silicone
- Dispensed volume of 120 [mm<sup>3</sup>]



- Electronic module
- Conformal coating with mono-component UV adhesive
- Dispensed volume of 35 [mm<sup>3</sup>]

### Medical



- Pacemaker
- Deposit of mono-component silicone adhesive to stick both parts together
- Dispensed volume of 40 [mm<sup>3</sup>]



- Rotary pump
- Filling with a two-component polyurethane
- Dispensed volume of 5 [cm<sup>3</sup>]

## TR300 Technical specifications

<b>Working area</b>	300 x 300 x 100 mm
<b>Positioning repeatability</b>	±20 µm
<b>Speed</b>	X and Y: <200mm/s, Z <100mm/s
<b>Programming</b>	HMI Windows oriented
<b>Operating system</b>	WINDOWS
<b>Electronic control</b>	industrial PC
<b>Interfaces</b>	Ethernet / USB port / Serial port
<b>Execution mode</b>	standalone or slave with via I/O or TCP/IP
<b>Axis actuation</b>	stepper motor
<b>Power supply</b>	230/115V- 50/60Hz
<b>Power consumption</b>	1 kVA
<b>Air pressure</b>	max. 6 bar
<b>Dimensions</b>	854 x 851 x 1'070 mm
<b>Weight</b>	~125 kg

